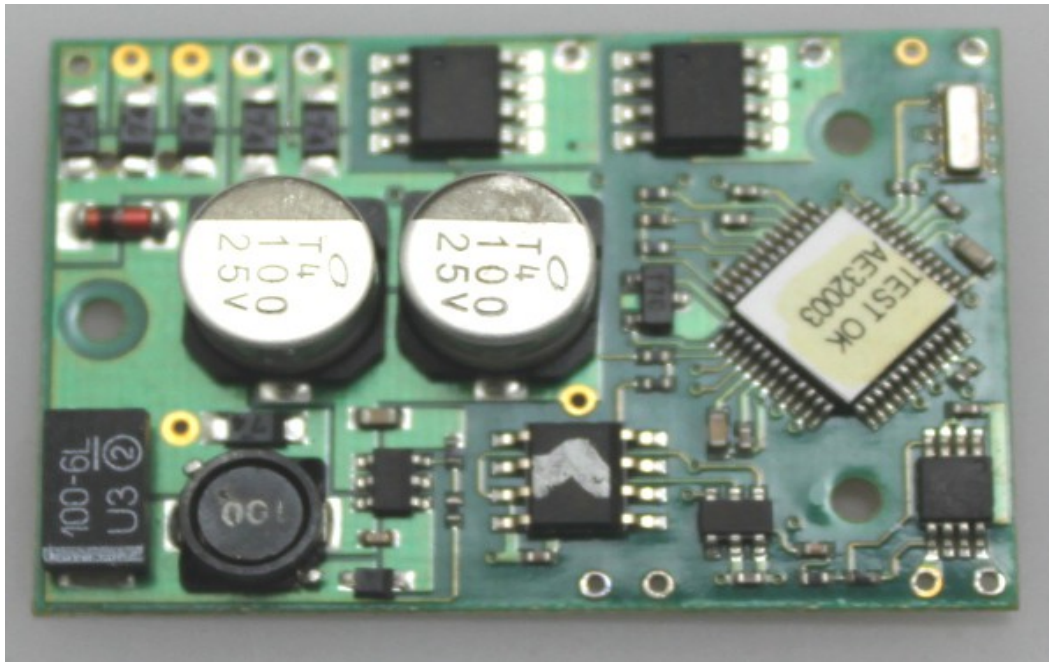


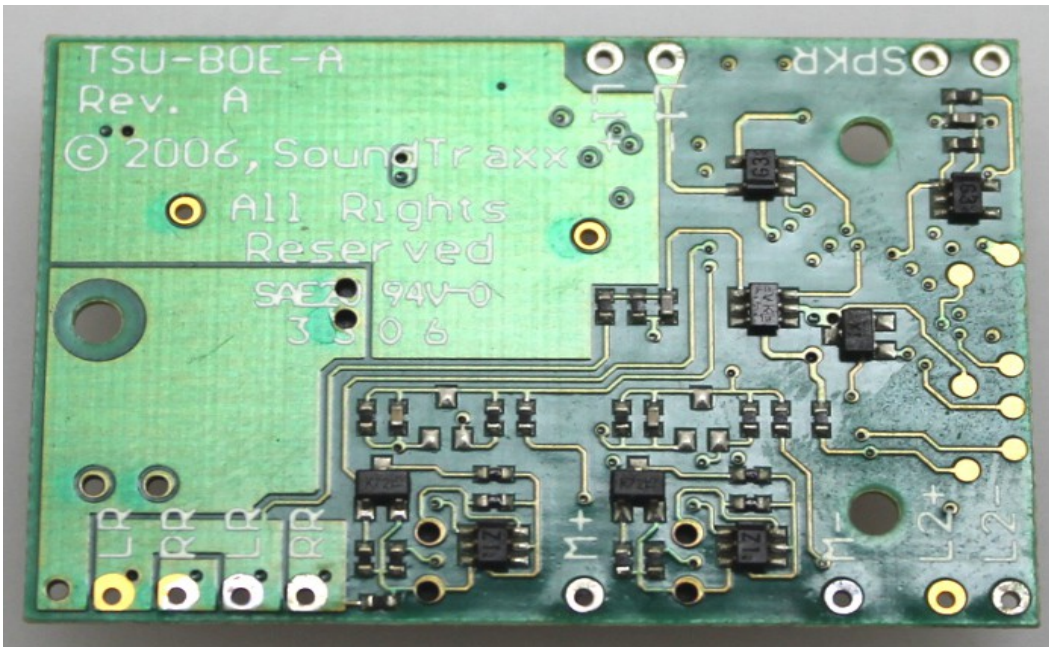
HO Sound PCB Installation – Board version 1

Front of Board:



Rear of Board:

[Start Here >](#)



Pin Identification (clockwise from top left):

Rear:

- L1+ : Light 1 positive
- L1- : Light 1 negative
- SPKR+ : Speaker Positive
- SPKR- : Speaker Negative
- L2- : Light 2 positive
- L2+ : Light 2 negative
- M- : Motor negative
- M+ : Motor positive
- RR : Right Pickup rail
- LR : Left Pickup rail
- RR : Right Pickup rail
- LR : Left Pickup rail

You connect an 8 Pin plug to the board with the following connections;

- White wire (pin 6) : L1-
- Blue wire (pin 7) : L1+
- Red wire (pin 8) : RR
- Black wire (pin 4) : LR
- Grey wire (pin 5) : M-
- Orange wire (pin 1) : M+
- Yellow wire (pin 2) : L2-

Next attach the speaker to the two speaker connections.