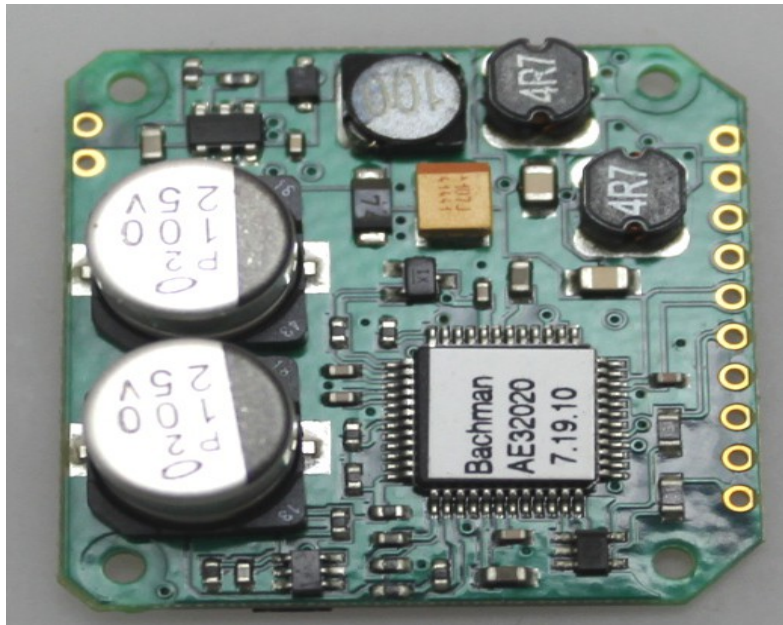
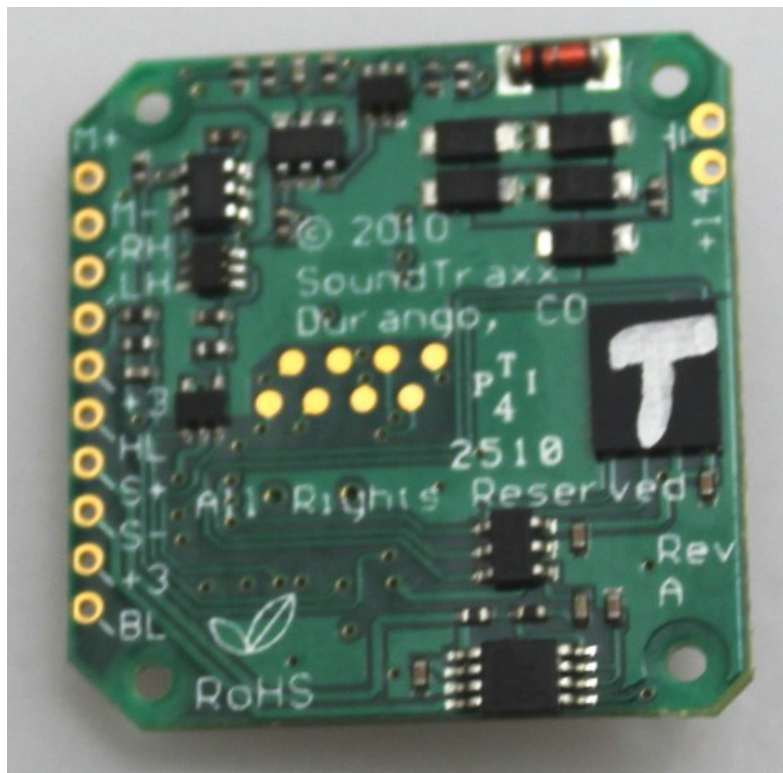


HO Sound Board Installation – Climax

Front:



Rear:



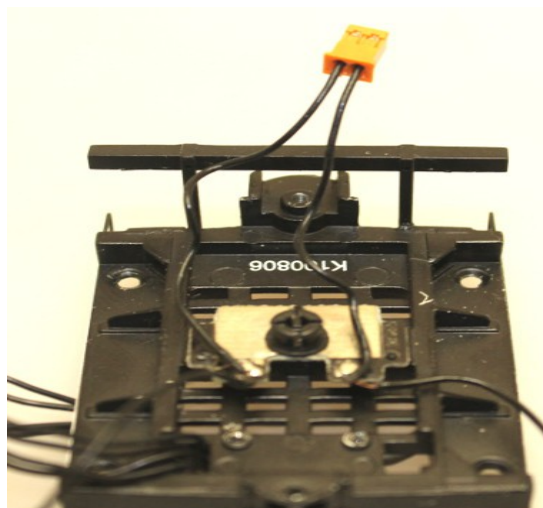
To properly wire this board you will attach a 4 pin plug, 2 pin plug, speaker and headlight wires to the correctly labeled spots.



The 4 pin wires are counted from left to right as Pin 1 through 4. They are connected to the following pads on the board.

- Pin 1: Motor+ (M+)
- Pin 2: Motor- (M-)
- Pin 3: Headlight (HL)
- Pin 4: +3

The 2 pin plug attaches to the left and right rail pickups as shown here:



and additionally has a wire running from the pickup pad to the pads on the board labeled LH and RH.

The rear headlight wire and plug is attached to the board at +3 (Orange wire) and BL (Brown wire)



Lastly attach the speaker to the sound board using the S+ (red wire in my sample) and S- (green wire).